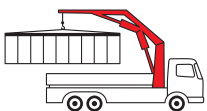


# PK 4501

High Performance

**PALFINGER** CRANE



**KTL**  
protected

**Paltronic  
50**  
controlled

**RRC**<sup>\*)</sup>  
Radio Remote Control  
operated

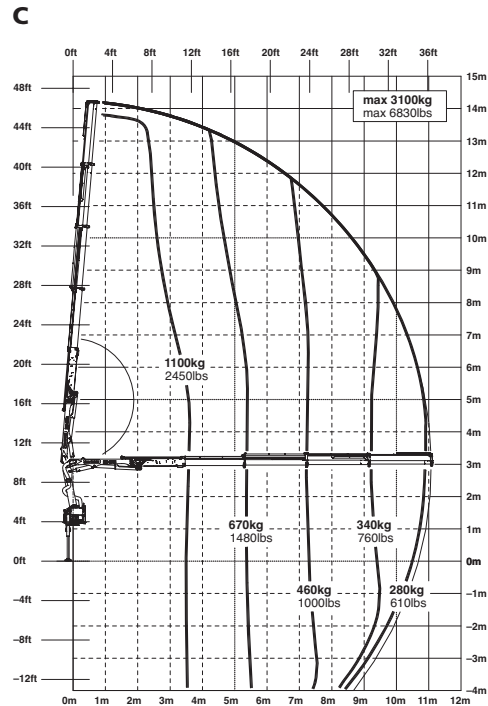
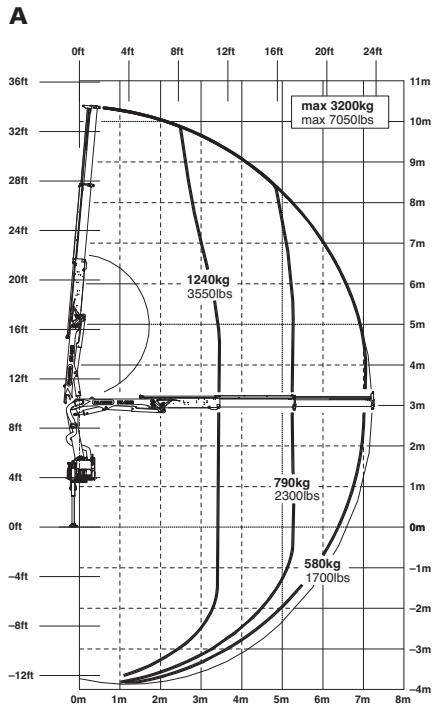
**ISC**<sup>\*)</sup>  
Integrated Stability Control  
monitored

## Versatile crane for light-weight trucks

The four hydraulic boom extensions of the PK 4501 enable enormous outreach, while its low deadweight makes it perfect for a wide array of applications. On account of the optimal ratio of lifting capacity to deadweight, even large loads can be moved with ease. At the same time, operators can also make full use of the maximum permissible capacity of their small trucks.

# Safe and comfortable

## PK 4501 High Performance



### Technical Specifications (EN 12999 H1-B3)

Max. lifting moment	4.4 mt/43.2 kNm	31840 ft.lbs	Stabilizer spread	std. 3.0 m/9' 10"	max. 5.0 m/16' 5"
Max. lifting capacity	3300 kg/32.4 kN	7270 lbs	Fitting space required (std.)	0.66 m	2' 2"
Max. hydraulic outreach	11.1 m	36' 5"	Width folded	2.10 m	6' 11"
Max. manual outreach	12.7 m	41' 8"	Max. operating pressure	320 bar	4640 psi
Slewing angle	400°		Recommended pump capacity	from 15 l/min to 25 l/min	4.0 US gal./min 6.6 US gal./min
Slewing torque	0.6 mt/5.9 kNm	4340 ft.lbs	RC-system	25 l/min	6.6 US gal./min
			Dead weight (std.)	698 kg	1540 lbs

