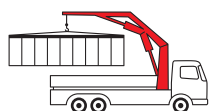


# PK 40002-EH

High Performance

**PALFINGER** CRANE



**KTL**  
protected

**Paltronic  
50**  
controlled

**RRC**  
Radio Remote Control  
operated

**ISC**  
Integrated Stability Control  
monitored

**AOS**  
Active Oscillation Suppression  
inside

**DPS plus**  
Dual Power System  
activated

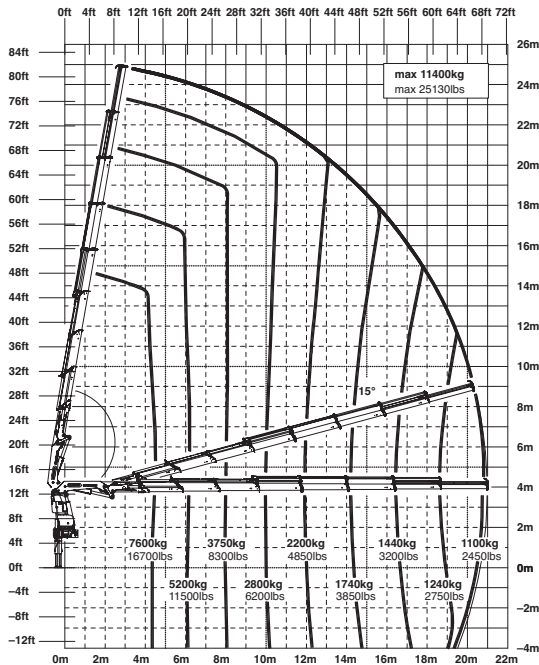
## It's a snap to join the heavy-duty range

Equipped with the endless slewing system and double slewing drive, maintenance-free extension boom system, functional design elements and Power Link Plus, the PK 40002 EH is truly an ambassador of PALFINGER's leadership in technology. As the perfect crane for a 3-axle chassis, it has a wide spectrum of uses and is equally suited for assembly work, transport of containers, rescue operations, and other heavy-duty jobs.

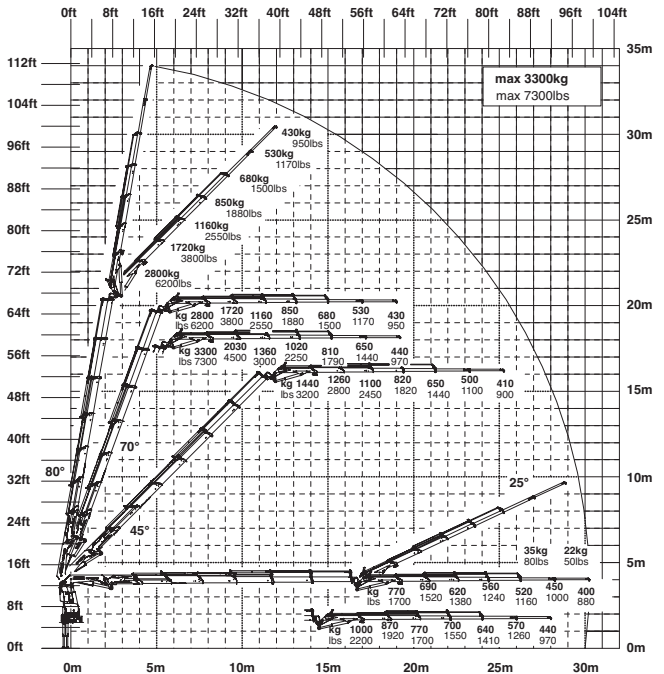
# A crane generation under the banner of technology and functional design

## PK 40002 EH High Performance

G



## E PJ080C JV2 DPS PLUS



### Technical Specifications (EN 12999 H1-B3)

Max. lifting moment	39.3 mt/385.5 kNm	284330 ft.lbs
Max. lifting capacity	14600 kg/143.2 kN	32190 lbs
Max. hydraulic outreach	21.0 m	68' 11"
Max. manual outreach	25.2 m	82' 8"
Max. outreach (with fly jib)	31.2 m	102' 4"
Slewing angle	endless	
Slewing torque with 1 gear	3.8 mt/37.3 kNm	27510 ft.lbs
Slewing torque with 2 gears	5.0 mt/49.1 kNm	36210 ft.lbs

Stabilizer spread	7.4 m	24' 3"
Fitting space required	min. 1.33 m / 4' 4"	max. 1.47 m / 4' 10"
Width folded	2.51 m	8' 3"
Max. operating pressure	350 bar	5075 psi
Recommended pump capacity	from 80 l/min to 100 l/min	21.1 US gal./min to 26.4 US gal./min
Dead weight (std.)	3851 kg	8490 lbs

