

# PK 30002-K

High Performance

**PALFINGER** CRANE

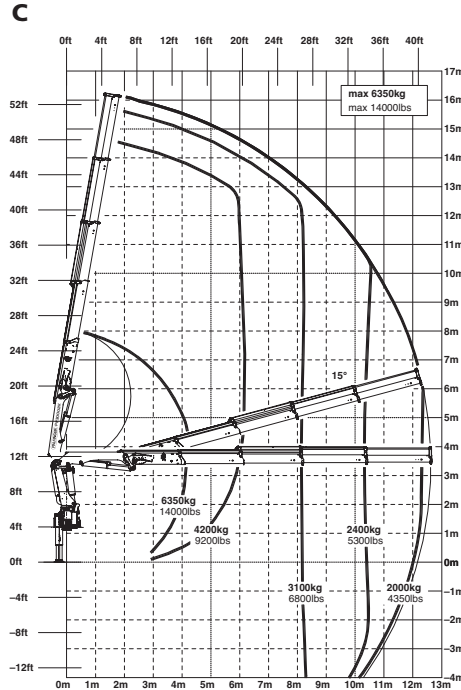
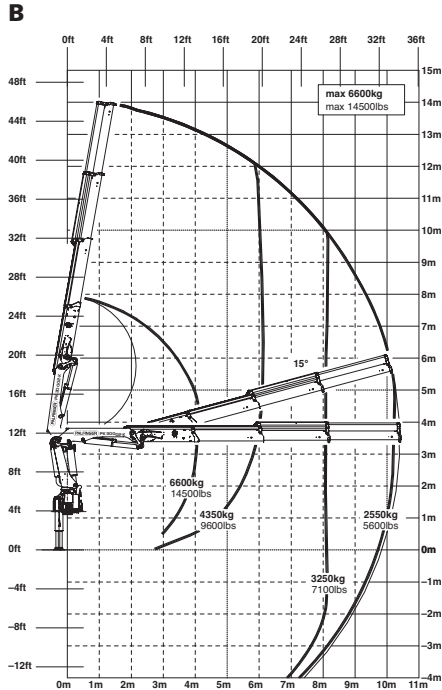


## The reliable workhorse

The PK 30002 K unites robust and reliable technology with uncompromising *High Performance* equipment. Equipped with Power Link Plus, it guarantees maximum manoeuvrability. Its short, weight-optimized boom system gives it an ideal performance weight. Its compact construction, short parking length, and exceptional hook height make it the ideal crane for a wide range of duties.

# Compact crane efficiency with Power Link Plus

## PK 30002 K High Performance



### Technical Specifications (EN 12999 H1-B3)

Max. lifting moment	28.2 mt/277.0 kNm	204290 ft.lbs
Max. lifting capacity	7000 kg/68.7 kN	15430 lbs
Max. hydraulic outreach	12.6 m	41' 4"
Max. manual outreach	17.0 m	55' 9"
Slewing angle	400 °	
Slewing torque	3.2 mt/31.4 kNm	23130 ft.lbs

Stabilizer spread	std. 5.6 m/18' 4"	max. 7,4 m/24' 3"
Fitting space required (std.)	0.92 m	3' 0"
Width folded	2.53 m	8' 3"
Max. operating pressure	320 bar	4640 psi
Recommended pump capacity	from 55 l/min to 80 l/min	14.5 US gal./min to 21.1 US gal./min
Dead weight (std.)	2790 kg	6150 lbs

