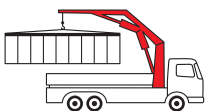


PK 19502

High Performance

PALFINGER CRANE



Cost-efficient Crane Technology

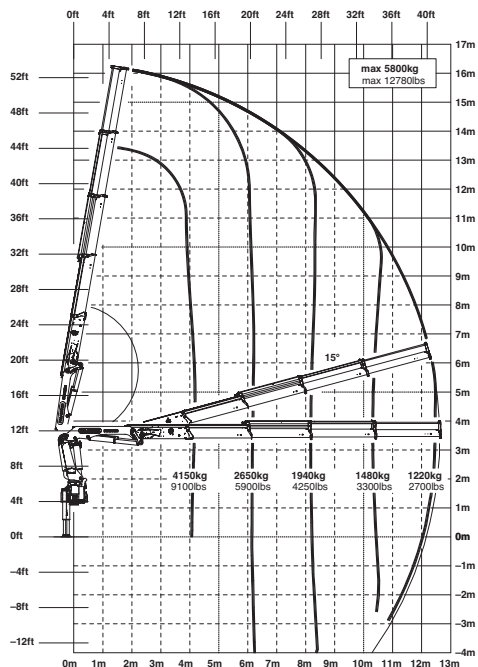
The PK 19502 is impressive due to its flexible use and high cost efficiency. Its compact transport dimensions together with a low dead weight makes it a sought-after helpmate in many sectors. Experienced operators appreciate its large stabilizer width and optimized design concept.

Combined with the new PALFINGER standing platform control system, the PK 19502 is convenient and comfortable to control.

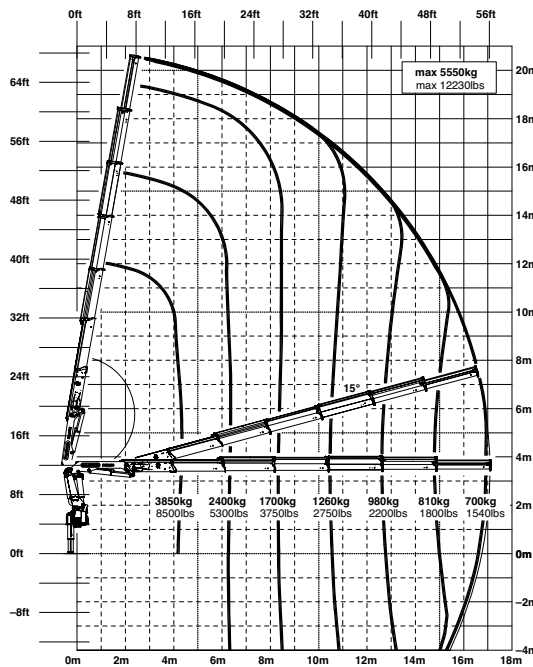
Cost-optimized Construction

PK 19502 High Performance

C



E



Technical Specifications (EN 12999 HC1 HD4/B3)

Max. lifting moment	18.8 mt/184.0 kNm	135700 ft.lbs
Max. lifting capacity	6100 kg/59.8 kN	13440 lbs
Max. hydraulic outreach	17.1 m	56' 1"
Max. manual outreach	19.1 m	62' 8"
Slewing angle	400 °	
Slewing torque	2.3 mt/22.6 kNm	16640 ft.lbs

Stabilizer spread	std. 5.0 m/16' 5"	max. 7.4 m/24' 3"
Fitting space required (std.)	0.91 m	2' 12"
Width folded	2.53 m	8' 4"
Max. operating pressure	320 bar	4640 psi
Recommended pump capacity	from 45 l/min to 65 l/min	11.9 US gal./min to 17.2 US gal./min
Dead weight (std.)	2391 kg	5270 lbs

